

Aldreds
Estate Agents



32 Bately Avenue

Gorleston, Great Yarmouth, NR31 6HJ

Guide £765,000 - £775,000



5



3



4



C

32 Bately Avenue

Gorleston, Great Yarmouth,

** GUIDE £765,000 - £775,000** Sitting just behind Gorleston's iconic Marine Parade on a double plot, a very short stroll to Gorleston's award winning beach, Aldreds are delighted to offer this spacious, imposing and extended five bedroom detached house with accommodation extending to around 3,100 sq ft . Ground floor accommodation includes an entrance porch with coat cupboard, large entrance hall, spacious formal lounge with garden room leading off, sitting room, study, a large open plan kitchen/breakfast/day room with lantern, large utility room and ground floor shower room. Part of the ground floor accommodation could be reconfigured to be used as an annexe due to any required consents. The first floor offers a spacious landing with doors on to balcony, master bedroom with dressing area and ensuite shower room, four further bedrooms and a family bathroom. Some of the first floor bedrooms and the balcony offers glimpses of the sea. Gas central heating and double glazing. The property sits on the corner of Arnott Avenue offering gardens to front, side and rear with the side garden facing south and rear garden west. There are three separate patios, lawned gardens and a array of outbuildings. A driveway for multiple cars leading to double garage. The position of this property in popular South Gorleston, a convenient distance from Norwich, Lowestoft and Great Yarmouth makes it an excellent opportunity for families looking for a large home by the sea or retirees wanting to take advantage of all that this area has to offer. Schools are nearby and Gorleston golf club is situated a few roads to the south. James Paget Hospital is situated approx. a mile to the west.

Entrance Porch

Entrance door to front, dado rail, walk in coat cupboard, oak flooring

Entrance Hall

Stairs to landing, dado rail, radiator,

Lounge

26'1" x 20'0" max (7.96 x 6.1 max)

Fireplace incorporating cast iron real flame effect gas fire, raised stone hearth under, adjoining stone plinths with solid marble mantle over, oak flooring, double glazed window to side aspect, two radiators, double glazed sliding doors to

Garden Room

16'8" x 9'5" (5.1 x 2.89)

Roof lantern with automatic opening windows, cast iron wood burner, double glazed windows to rear and side aspects, double glazed French doors to garden

Study

9'5" x 6'1" (2.88 x 1.86)

Double glazed window to side aspect, radiator, oak flooring

Sitting Room

15'9" x 10'11" (4.82 x 3.33)

THIS ROOM ALONG WITH THE SHOWER ROOM AND UTILITY ROOM COULD FORM AS SELF CONTAINED ANNEXE. Bow double glazed window to front aspect, feature fireplace, radiator, oak flooring

Shower Room

8'11" x 5'5" (2.72 x 1.66)

Shower in walk in tiled cubicle, hand basin in vanity unit with mixer tap over, low level WC, part tiled walls, inset ceiling lights

Utility Room

21'1" x 10'3" plus recess (6.44 x 3.14 plus recess)

Range of base & wall units with quartz worktops, tiled floor, inset ceiling lights, two double glazed windows to rear aspect, plumbing for washing machine, space for tumble dryer, wine fridge, sink with drainer and mixer tap, radiator

Rear Hallway

Tiled floor, door to rear, walk in airing cupboard/boiler room/boot cupboard with wall mounted gas boiler

Kitchen/Breakfast Room

16'9" x 14'11" (5.13 x 4.57)

Opens through to formal dining room, base & wall units with quartz, island unit with breakfast bar, double glazed window to front aspect, inset ceiling lights, two radiators, induction hob, sink with drainer and mixer tap, two electric ovens, integrated microwave, integrated dishwasher, integrated fridge/freezer



Aldred
Estate Agents

Aldred
Estate Agents



Dining Room

17'2" x 15'11" (5.25 x 4.86)

Sealed unit double glazed roof lantern, double glazed window to front aspect, double glazed bi folders doors leading to garden, radiator, inset ceiling lights

Landing

Walk in airing cupboard, double glazed French doors to balcony

Master Bedroom

13'9" x 13'11" plus dressing area 10'2" x 8'5" (4.2 x 4 plus dressing area 3.1 x 2.57)

Split level, double glazed window to side aspect, double glazed window to rear aspect, radiator, door to

Ensuite Shower Room

14'11" x 6'2" (4.55 x 1.9)

His & hers hand basin with mixer taps, shower in tiled cubicle, low level WC, two opaque double glazed windows to side aspect, radiator

Bedroom 2

15'10" x 10'11" (4.83 x 3.33)

Built in wardrobes, double glazed window to front aspect, radiator

Bedroom 3

13'3" x 10'4" plus recess (4.04 x 3.16 plus recess)

Double glazed window to rear aspect, radiator

Bedroom 4

12'11" x 10'2" (3.94 x 3.1)

Storage cupboard, double glazed window to front aspect, radiator

Bedroom 5

9'10" x 7'5" (3 x 2.27)

Storage cupboard, double glazed window to front aspect, radiator

Bathroom

15'3" x 6'4" (4.67 x 1.94)

Panel bath, shower in cubicle, low level WC, hand basin in vanity unit with mixer tap, two opaque double glazed windows to side aspect, inset ceiling lights

Outside

To the front of the property there is a large driveway offering ample parking which extends down the side of the property to the double garage at the rear (5.18m x 5.08m) the garage has an electric up & over door and benefits from power & light. The front garden is partly enclosed to the east and south by bushes and is shingled with shrubs and plants. There are lawned gardens to the south and rear with brick weave patios or the rear hallway and garden room and a porcelain patio off the dining room, the garden is enclosed to the south by a wall and bushes, brick shed with power & light (2.41m x 1.62m), brick wood store, outside WC, greenhouse, timber shed, vegetable patch

Tenure

Freehold

Services

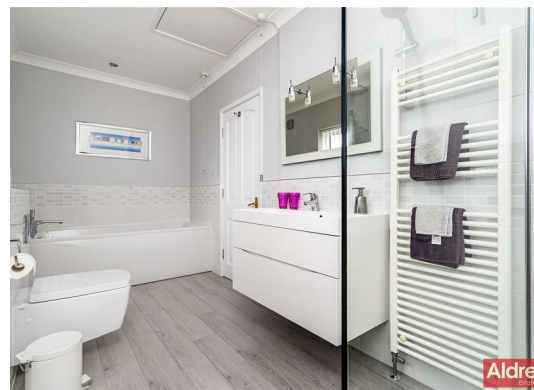
Mains water, electricity, gas, drainage

Council Tax

Band F

Location

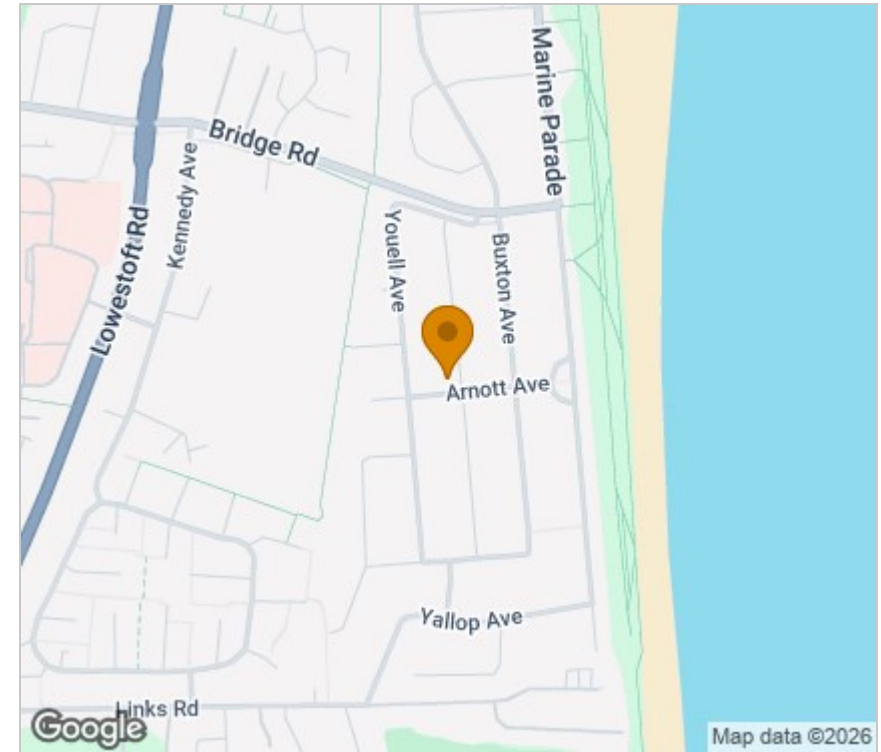
Gorleston-on-Sea is a coastal town 2 miles from Great Yarmouth centre and has a varied selection of local shops * Golf Course * Modern District hospital * Schools for all ages * Library * Regular bus services to the main shopping areas and a sandy beach.



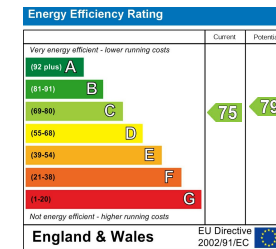
Floor Plan



Area Map



Energy Efficiency Graph



Viewing

Please contact our Aldreds Gorleston Office on 01493 664600 if you wish to arrange a viewing appointment for this property or require further information.

Disclaimer

These particulars are issued on an understanding that all negotiations shall be conducted through Messrs. Aldreds. Please note: Messrs. Aldreds for themselves and for the vendors or lessors of this property whose agents they are given notice that: 1. Particulars are set out as a general outline only for guidance of intending purchasers or lessees, and do not constitute nor constitute part of, an offer or contract. 2. All descriptions, dimensions, references to condition and necessary permissions for use and occupation, and other details are given without responsibility and any intending purchasers or tenants should not rely on them as statements or representations of fact but must satisfy themselves by inspection or otherwise as to the correctness of each of them. 3. No person in the employment of Messrs. Aldreds has any authority to make or give any representation or warranty whatever in relation to this property. 4. If you are proposing to visit the property and are travelling some distance please check with Aldreds on the issue of availability prior to travelling. 5. Aldreds Property Consultants and associated services may offer additional services to the prospective purchaser for which they will be entitled to receive a commission. Aldreds are pleased to be working with Mortgage Advice Bureau. They're an award-winning mortgage broker with over 1,400 advisers across the UK, and have access to over 12,000 mortgage products from over 90 lenders. Aldreds Estate Agents Ltd receive a commission of £200 on each completed case. Your home may be repossessed if you do not keep up repayments on your mortgage. There may be a fee for mortgage advice. The actual amount you pay will depend upon your circumstances. The fee is up to 1%, but a typical fee is 0.3% of the amount borrowed. Mortgage Advice Bureau is a trading name of Mortgage Seeker Limited which is an appointed representative of Mortgage Advice Bureau Limited and Mortgage Advice Bureau (Derby) Limited which are authorised and regulated by the Financial Conduct Authority. Mortgage Seeker Limited Registered Office: Lovewell Blake, Sixty Six North Quay, Great Yarmouth, Norfolk, NR30 1HE. Registered in England Number: 03721415. 6. Potential purchasers should check with their providers that the broadband and mobile phone coverage they would require is available.

149 High Street, Gorleston, Norfolk, NR31 6RB

Tel: 01493 664600 Email: gorleston@aldreds.co.uk <https://www.aldreds.co.uk/>

Registered in England Reg. No. 08945751 Registered Office: 17 Hall Quay, Great Yarmouth, Norfolk NR30 1HJ

Directors: Mark Duffield B.S.c. FRICS. Dan Crawley MNAEA Paul Lambert MNAEA